

Subject: Vehicle Body Identification Numbers

Ref: VBID 01V0

The following is a brief overview of the body VIN/S.O. characters found on the most popular Mopar muscle cars of the mid 1960's and early 1970's, I would like to bring to your attention the importance of having a body numbers matching vehicle. This implies that the VIN and/or a combination of the VIN tag and trim numbers match the numbers on the body.

On the A, B, and E body cars, Chrysler stamped the partial characters of the Vehicle Identification Number (VIN) or Sequence Order (S.O.) in two locations in general they were considered the primary and secondary locations. All years use a combination of characters found on the trim tag and the VIN tag. The number that is found on the primary and secondary location should be identical.

The Primary Location is always the radiator upper core support bar. There was not a specific target position just a target location, so the stamp itself can vary in position from one car to another.

The Secondary Location varies by year and make: Just like the primary number there is not a specific target position just a target location.

1963-65 B bodies: They have a two digit from the VIN and eight digits S.O. number stamped on the package tray. Example: 57 00802220

1966 and 67 B bodies: They have a two digit model year and eight digits from S.O. number on the rear beam behind the rear bumper. Example 71 1014449

1968 B bodies: They have the single character plant code, single digit model year, single character car model and the S.O. number stamped on the left hand side of the deck lid seal lip. Example: A8W414331

1969-70 B bodies have eight characters from the VIN numbers stamped on the left hand side of the deck lid seal lip. Example A9 210877

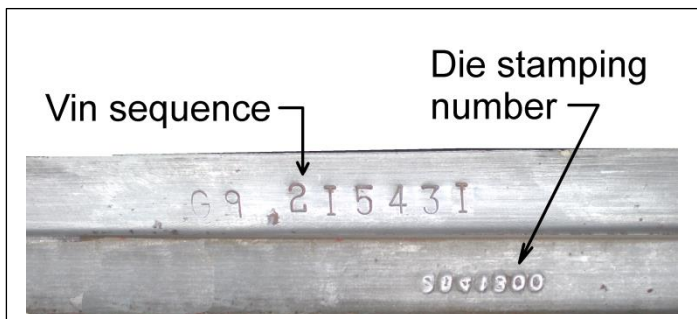
1970-74 E bodies and 1971-74 B bodies have the last eight characters of the Dash VIN plate stamped on the cowl near the driver's side of the cowl screen. In general the E body was built at the Los Angeles plant the numbers were stamped in the horizontal plane of the, easily visible. On cars built at the Hamtramck plant, the numbers were stamped in the face or vertical part of the upper radiator support bar facing the firewall on the driver's side and often times difficult to see if the radiator is installed. However, during an early period production in 1970 for a short period of time at Hamtramck Assembly (Dodge Main) the number of the radiator support were placed on top like the Los Angeles Assembly Plant. After 1971 all numbers were stamped on the top of the radiator upper core support bar. Example: E0 111382



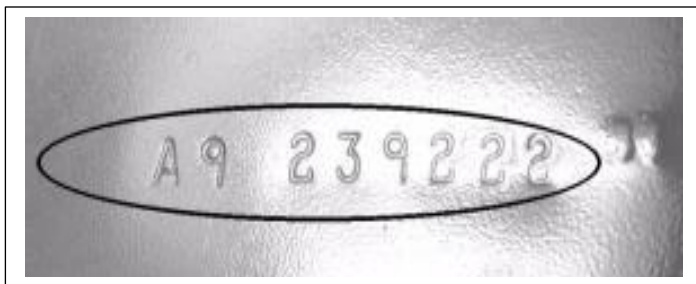
1963-74 A bodies: All Dusters, Demons and Dart sports (Fast Backs) the Primary VIN is located on the core support and the secondary number is stamped on the rear package tray near speaker opening.

- 1963 - 67 A bodies: They have a two digit model year and eight digits from S.O. number on the radiator core support. Example 32 11062059
- 1968 A bodies: They have a single character plant code, single digit model year, single character car model and the S.O. number stamped on the left hand side of the deck lid seal lip. Example: B8L 111331
- 1969 -71 A bodies. They have partial VIN stamped on the right hand deck lid seal ledge. Example B3 234450.
- 1970 -74 A bodies fast backs : They have the partial VIN stamped on the package tray. Example: B2 220890
- 1972 -1975 A bodies. They have eight characters form the VIN numbers stamped on the left hand side of the deck lid seal lip. Example B2 310667.

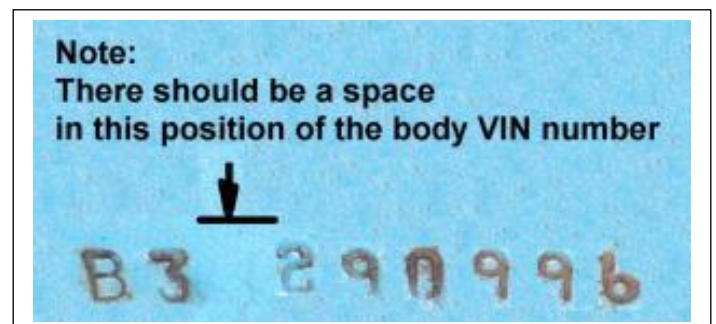
Additional information can be found in the reference manuals on the MMC detroit.com web site. If you have any questions you can reach out to MMC Detroit as well.



Typical die stamp reference number



1969 reference number



1973 reference number



1968 reference number



1967 reference number